

System XTEND 80



System XTEND 100 S



System XTEND 120 – 500 F

ETA  
ETAG n°032

# EN ROUTE WITH XTEND

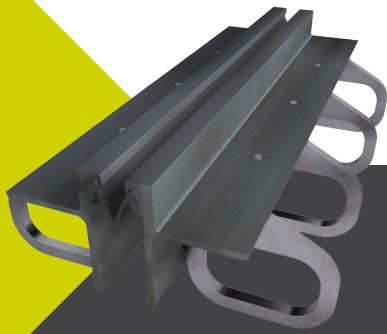


## REFERENZEN ÖSTERREICH

Selected references  
from AUSTRIA



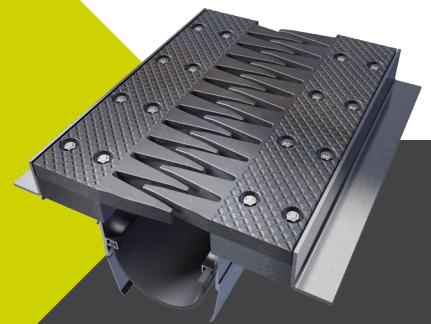
<b>A9 Brückenobjekt KBM Stmk. Nord</b>	System XTEND 80
<b>Donaubrücke Steyregg</b>	System XTEND 240 F / 300 F
<b>A8 SAB Haag - Ried Objekt I 51</b>	System XTEND 100 S
<b>A12 Inntal Schwaz</b>	System XTEND 100 S
<b>150998 B76 Gamsbachbrücke</b>	System XTEND 120 F
<b>L219.001 Bahnüberführung Selzthalbahn</b>	System XTEND 100 S
<b>ÖBB Unterführung LIND</b>	System XTEND 80
<b>B83 Kärntnerstraße</b>	System XTEND 120 F
<b>A10 F21 Eben</b>	System XTEND 100 S
<b>B122 Voralpen Straße</b>	System XTEND 100 S
<b>A12 Kufstein Süd</b>	System XTEND 80 / 180 F
<b>A22 Kaisermühlen Piratsteg</b>	System XTEND 80
<b>B110 Tillacher Grabenbrücke</b>	System XTEND 80
<b>A5 Baulos 4</b>	System XTEND 100 S
<b>B145 Agerbrücke Regau</b>	System XTEND 100 S
<b>L5102.05 Traisenbrücke Ochsenburg</b>	System XTEND 100 S
<b>A12 Wattens Fritzens</b>	System XTEND 100 S / 220 F
<b>B30 Thayabrücke bei Primmersdorf</b>	System XTEND 80
<b>B37.14 Talübergang Lengelfeld</b>	System XTEND 100 S
<b>S36 K08 Spielbergbrücke</b>	System XTEND 80
<b>S36 K06S Sachendorfbrücke</b>	System XTEND 80
<b>S36 K01 Rassnitzbrücke</b>	System XTEND 100 S
<b>S36 K03 ÜF-Waldesruh</b>	System XTEND 80
<b>S36 K09 Ingeringbachbrücke</b>	System XTEND 100 S
<b>S36 Z01 Stadlhofbrücke</b>	System XTEND 80
<b>A13 Europa-Vorlandbrücke</b>	System XTEND 100 S
<b>L2 Steiner-Landstr. Dellach Draubrücke</b>	System XTEND 80
<b>A2 ZR2 AST-Gleisdorf-West</b>	System XTEND 100 S
<b>S6 KSM13 Mürzbrücke St. Marein</b>	System XTEND 80
<b>B86 Villacherstr unt Fellach-Brücke</b>	System XTEND 80
<b>S6 KSM13 Mürzbrücke St. Marein</b>	System XTEND 100 S
<b>B166 Obj6143 Mürzbrücke Zubrücke S6</b>	System XTEND 80



System XTEND 80



System XTEND 100 S



System XTEND 120 – 500 F

ETA  
ETAG n°032

# EN ROUTE WITH XTEND

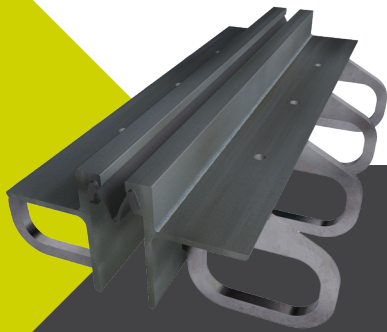


## REFERENZEN ÖSTERREICH

Selected references  
from AUSTRIA



Schützenberg	System XTEND 180 F
Alpenbahnhof BA1	System XTEND 100 S
E35 Vogauwegbrücke	System XTEND 100 S
Märzenkellerbrücke	System XTEND 100 S
A12 Radfeld/Kramsach BA1	System XTEND 100 S
WL Schrick/WL Kettlasbach BA1	System XTEND 100 S
E36 A9 Phyrn Leibnitz-Vogau BA1	System XTEND 100 S
E37 A9 Phyrn Leibnitz-Vogau	System XTEND 100 S
E32 A9 Phyrn	System XTEND 120 F
Objekt A09 BA1	System XTEND 80
Objekt G22 BA1	System XTEND 80
ZGW 1B	System XTEND 80
A12 Silbrücke RFB Kufstein	System XTEND 100 S
A12 Achse 52 BA1	System XTEND 100 S
A12 Achse 42a BA1	System XTEND 120 F
A12 Achse 43c BA1	System XTEND 120 F
A12 Achse 49a BA1	System XTEND 120 F
A12 Achse 48 BA1	System XTEND 180 F
E30 A9 Phyrn	System XTEND 100 S
E34 A9 Phyrn	System XTEND 100 S
L221 Sanierung Feldbach Raabau	System XTEND 80
A12 Inntal Autobahn Terfener Innbrücke	System XTEND 180 F
A10 Tauern Autobahn Urstein / Hallein	System XTEND 100 S
L193 Faschinastraße Hölltobelbrücke	System XTEND 80
B146 Sanierung Kummer,- Klausgrabenbrücke	System XTEND 80
B171 INS Mühlauer Innbrücke	System XTEND 100 S
B132 Reutergrabenbrücke	System XTEND 100 S
Gleisbau Schönaugürtel	System XTEND 80
	System XTEND 120 F
A13 Brennerautobahn Gschnitztalbrücke Plon	System XTEND 260 F
	System XTEND 200 F
A12 Inntal Autobahn INSB K5 Kufstein 2020	System XTEND 180 F



System XTEND 80



System XTEND 100 S



System XTEND 120 - 500 F

# EN ROUTE WITH XTEND



## REFERENZEN ÖSTERREICH

Selected references  
from AUSTRIA

A23 Südosttangente Hochstraße St. Marx

System XTEND 240 F

System XTEND 240 F

System XTEND 240 F

System XTEND 120 F

System XTEND 240 F

System XTEND 240 F

System XTEND 100 S

System XTEND 300 F

System XTEND 260 F

System XTEND 300 F

System XTEND 260 F

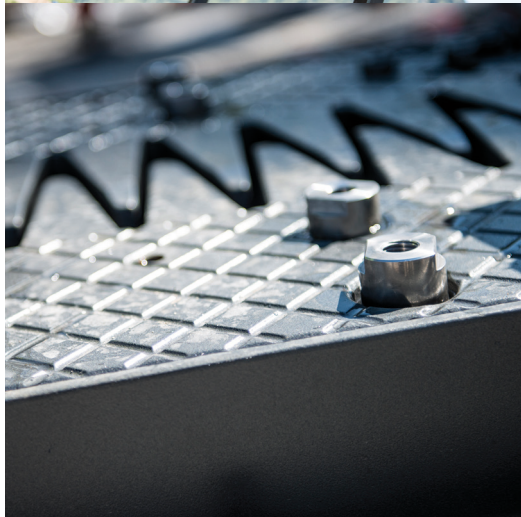
System XTEND 240 F

System XTEND 180 F

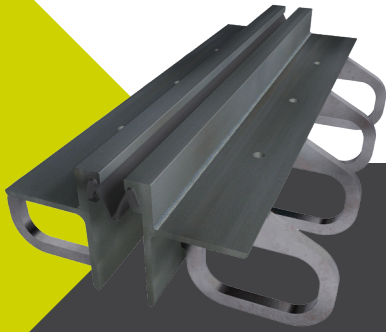
System XTEND 100 S

System XTEND 120 F

System XTEND 240 F



uvm.



System XTEND 80



System XTEND 100 S



System XTEND 120 – 500 F

# EN ROUTE WITH XTEND

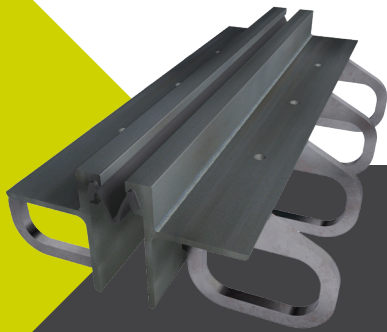


## REFERENZEN SCHWEIZ

Selected references  
from SWITZERLAND



Komm. Zingel, CH-Seewen	System XTEND 160 F
Komm. Zingel, CH-Seewen	System XTEND 80
Komm. Zingel, CH-Seewen	System XTEND 200 F
Komm. Zingel, CH-Seewen	System XTEND 300 F
BE 15-2879 - Viadukt Ridli	System XTEND 120 F
CH-Urmiberg	System XTEND 300 F
CH-Urmiberg	System XTEND 160 F
CH-Sechzehni	System XTEND 300 F
CH-Sechzehni	System XTEND 160 F
CH-Bohli	System XTEND 200 F
Steblenbach Brücke	System XTEND 100 S
BE ÜF Töss Süd	System XTEND 100 S
Proj. 13-2520 Wilihofbrücke	System XTEND 100 S
Station Vorderrheinbrücke-Valendas	System XTEND 100 S
Entflechtung Basel-Muttenz	System XTEND 100 S
Saienbrücke	System XTEND 100 S
Teufengrabenbrücke	System XTEND 100 S
Mittelperon	System XTEND Sonder
Hinterrheinbrücke	System XTEND 100 S
uvm.	



System XTEND 80



System XTEND 100 S



System XTEND 120 – 500 F

# EN ROUTE WITH XTEND

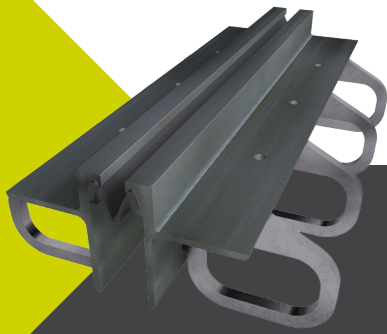


## REFERENZEN NIEDERLANDE

Selected references  
from THE NETHERLANDS



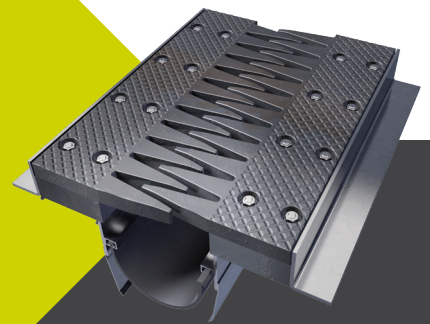
A12	System XTEND 80 /
A12	Fugen Sonderkonstruktion
De Centrale As, KW de Falom	System XTEND 80 / 100 S
BE A12-Kunstwerk 4	System XTEND 80
A12 Kunstwerk 8	System XTEND R 80
N23 Hoorn-Zwaag	System XTEND RS 100
A12 Paralellstructuur	System XTEND RS 100 /
A12 Paralellstructuur	Fugen Sonderkonstruktion
VOC Leijgraaf Noord en Zuid	System XTEND RS 100
N309	System XTEND RS 100
Hornerbrug	System XTEND 170 F
A1 Beekbergen	System XTEND 100 NL / 25
Beatrixluis	System XTEND 80 NL
VOC-Helenaavaart Nord	System XTEND 80 NL
N23	System XTEND 80 NL / 21
N23	System XTEND 100 NL
N23	System XTEND 100 NL / 25
N23 KW 5C	System XTEND 100 NL
Joure	System XTEND 80 NL / 25
Joure	System XTEND 100 NL / 25
Boschdijk 116	System XTEND 100 NL / 25
Kerkstraat-Oost	System XTEND 100 NL / 25
Helenaavaart Süd	System XTEND 80 NL / 21
A27 - A1	System XTEND 80 NL / 21
A27 - A1	System XTEND 100 NL / 25
N23 - Nachlieferung	System XTEND 80 NL / 21
VOC 2018	System XTEND 80 NL / 21
Projekt 43 FM	System XTEND 80 NL / 21
A12 Paralellstructuur	System XTEND 100 NL / 25
Extra levering	System XTEND 100 NL / 25
Viadukt Shiphol	System XTEND 80 NL / 21
VOC Drielseweg-West	System XTEND 100 NL / 25
uvm.	



System XTEND 80



System XTEND 100 S



System XTEND 120 – 500 F

# EN ROUTE WITH XTEND



## REFERENZEN UNGARN

Selected references  
from HUNGARY

M1 Raba

System XTEND 320 F



## REFERENZEN DEUTSCHLAND

Selected references  
from GERMANY

Korntalbrücke

System XTEND 100 S

